

City of Edmonton Composting Facility



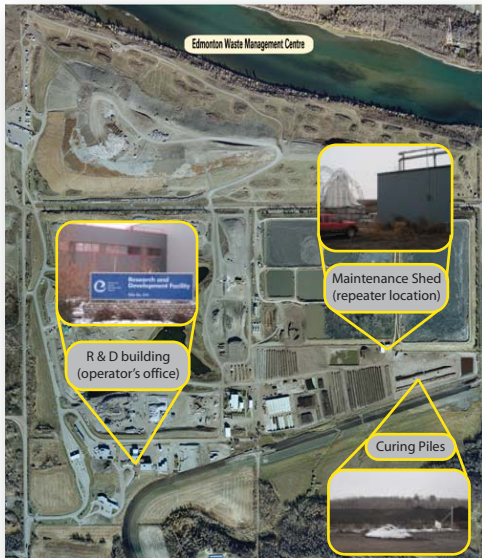
The Edmonton Composting Facility is the largest co-composter in North America. Co-composting is a combination of residential waste and biosolids. Reotemp currently has 8 wireless temperature probes (EcoProbes) in use.

EDMONTON FACILITY STATS

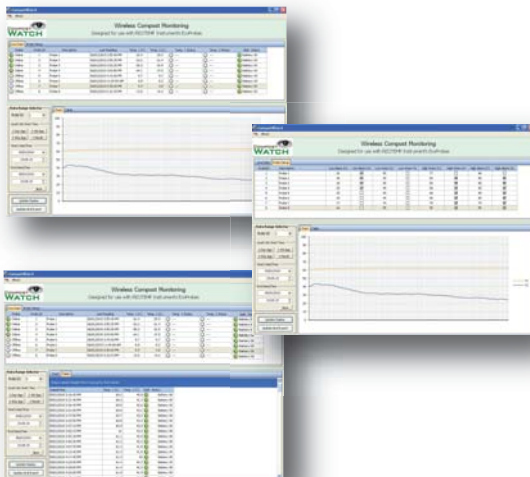
- Annual Capacity: 200,000 tons residential waste; 100,000 tons biosolids.
- Compost Produced: approximately 80,000 tons/year.

REOTEMP PROJECT SCOPE

- 8 Wireless Probes (EcoProbes)
- Outdoor/extreme cold down to -40C
- 4,000ft (1.2 km) from compost to operator building.
- 2 antenna installations (1 repeater)
- PC based system. Using Reotemp's Compost Watch software.



The facility covers a large area which presented unique challenges. The operator was located at the Research & Development building (shown on map) roughly 4,000ft (1.2km) from the curing piles where the 8 EcoProbes are located. Since the range of the EcoProbes is 1,000ft line of sight, Reotemp mounted an antenna on top of a nearby maintenance shed (shown) to act as a repeater. A second antenna was mounted on the roof of the R&D building. The R&D antenna was hard-wired to the operator's computer by running wires through an access point on the roof. The operator is now able to receive real-time temperature data from the curing piles (shown) 4,000ft away!



Compost Watch is a windows-based software designed for use with Reotemp's EcoProbes. The software was uploaded to the operator's computer & connected to the radio link. The operator is now able to see real-time temperatures from the curing piles, historical data, temperature graphs, temperature charts, battery status, high/low temperature alarms and warnings, and avoid the harsh winter weather!