

Weld Pad Thermocouples

Customer:

Major Power Plant located in Ohio, U.S.A..

Background:

This power plant was in the middle of a maintenance shut down and needed a large number of weld pad thermocouples to monitor a variety of equipment: steam drums, downcomers, headers of superheaters, and headers on re-heaters. The weld pads are welded onto the outside of steam pipes which see temperatures of 750°F or higher.

Problem:

While the weld pads were fairly standard in design and layout, **the customer needed over 5 miles of sensors in less than 2 weeks.** The maintenance engineer responsible for the equipment involved contacted REOTEMP to see if they could meet the tight delivery deadline.

Solution:

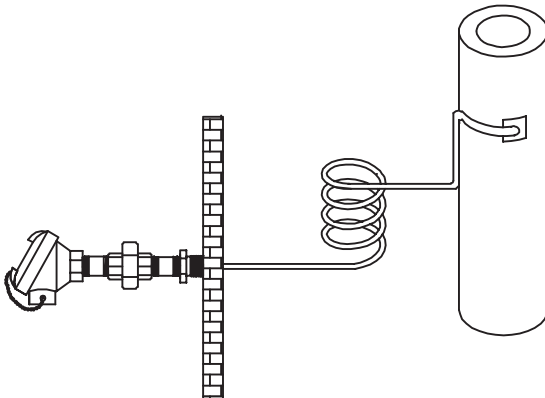
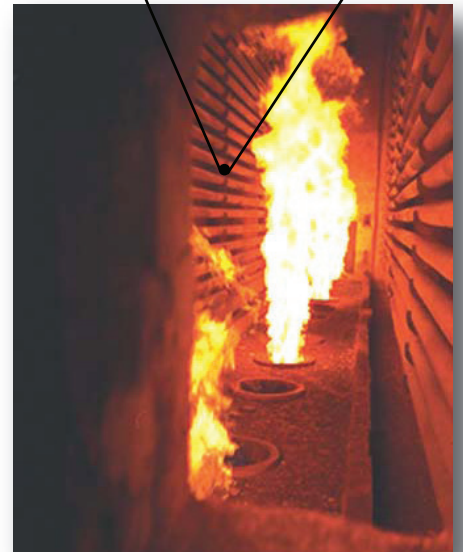
REOTEMP's thermocouple & RTD product manager determined that all of the components needed for the order were in-stock and immediately began manufacturing the weld pads. In order to make all of the sensors before the maintenance shutdown ended, REOTEMP worked overtime on multiple days.

Results:

The customer received all 5 miles of their sensors in time. The REOTEMP sensors were welded to hundreds of steam pipes throughout the plant. The customer was relieved to have the sensors in place and was extremely satisfied with the quick delivery REOTEMP was able to provide!



Power Generation



Distributed by: