

## 3-VALVE MANIFOLD



Flange-Flange



Female-Female



Flange-Female

REOTEMP's 3-Valve Manifold can be mounted to differential pressure gauges as well as differential transmitters. This manifold features two isolation valves and an equalizing valve.

### FEATURES / BENEFITS

- FKM O-ring Seal and PTFE Back-up Ring Below the Stem Threads to Protect from Corrosion and Galling; Soft Seat Comes Standard with Delrin Seat
- PTFE or Grafoil Packing Optional
- All Stems are 316SS
- Vinyl Dust Cap for Bonnet & Stem (Non-packing)
- Rolled Threads for Strength, Durability and Ease of Use
- All Valves are Helium Leak Tested for Optimal Performance

### SPECIFICATIONS

<b>Body Material</b>	316 Stainless Steel, Zinc-nickel Plated Carbon Steel
<b>Pressure Rating</b>	Hard Seat - 10,000 psi at 200°F, Soft Seat - 6,000 psi at 200°F.
<b>Orifice</b>	0.187"
<b>Flow</b>	Hard Seat C <sub>v</sub> : 0.44, Soft Seat C <sub>v</sub> : 0.76
<b>Connections</b>	Available in block, single flange, or double flange connection for remote or direct installation

**HOW TO ORDER:** Choose options to build a part number. For example: **M30HNNNS-M2NC**

**M30**

**H**

**NN**

**S**

**-M2NC\***

**MODEL**

**SEAT TYPE**

**CONNECTION SIZE**

**MATERIAL**

**OPTIONS**

**M30** = 3-Valve Manifold  
**M3M** = 3-Valve Manifold (Mini-Body)

**H** = Hard Seat  
**S** = Soft Seat

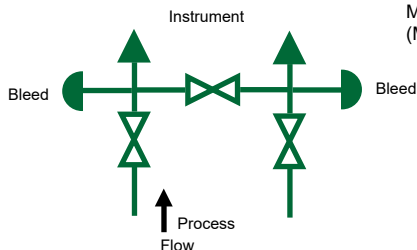
**NN** = 1/2" F x 1/2" F  
**NF** = 1/2" F x Flange  
**FF** = Flanged x Flanged

**C** = Carbon Steel  
**S** = Stainless Steel  
**H** = Hastelloy C  
**M** = Monel

*Available on M3H and M3S:*  
**-M1** = 2" CS Pipe Mounting Kit  
**-M2** = 2" SS Pipe Mounting Kit  
**-FC** = CS Futbol  
**-FS** = SS Futbol  
**-DC** = CS Dielectric Kit  
**-DS** = SS Dielectric Kit  
**-P1** = PTFE Packaging

*Available on M3H ONLY:*  
**-P2** = Grafoil Packing (316SS Body Rating 1,000°F at 1,500 psi)

\*See 98 for Additional Options

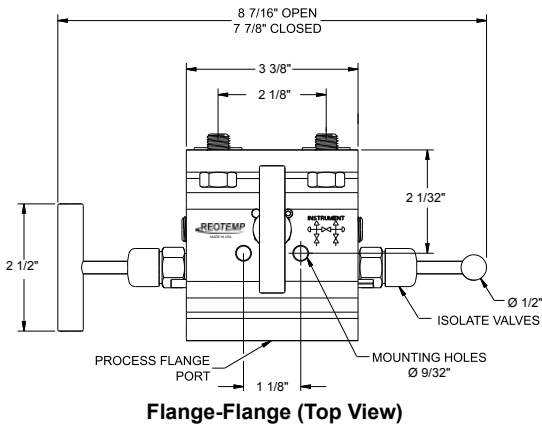


## 3-VALVE MANIFOLD

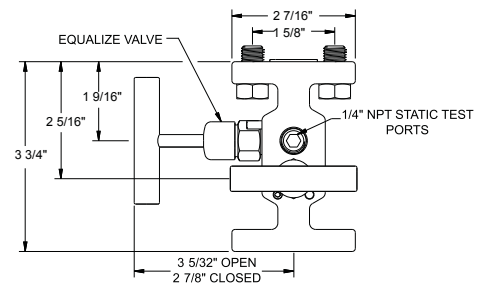


Visit [reotemp.com](http://reotemp.com)

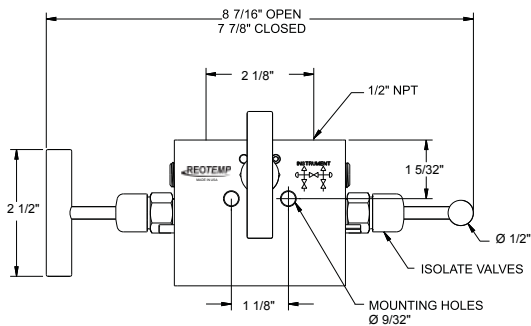
- ✓ Check Stock
- ✓ Get Price
- ✓ Configure Part #
- ✓ Download PDF Data Sheets



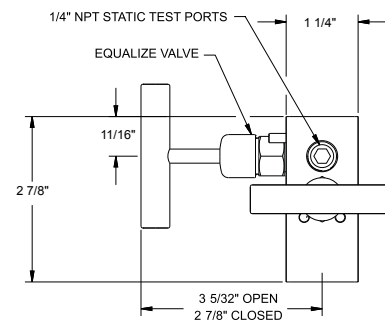
**Flange-Flange (Top View)**



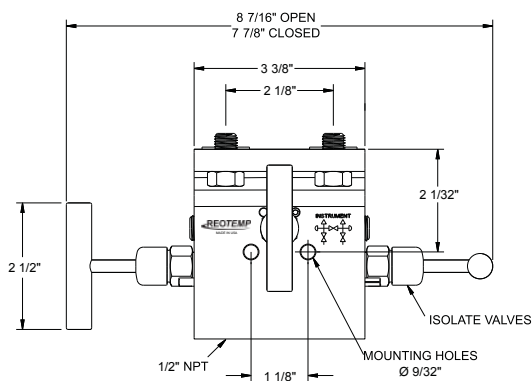
**Flange-Flange (Side View)**



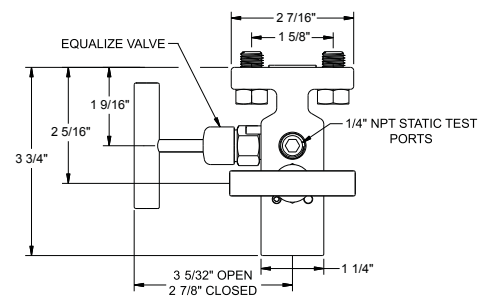
**Female-Female (Top View)**



**Female-Female (Side View)**



**Flange-Female (Top View)**



**Flange-Female (Side View)**

## INSTRUMENT & VALVE ASSEMBLIES

REOTEMP offers in house mounting services by preinstalling pressure (or dP) instrumentation on valve assemblies prior to shipping to allow for stress free/easy installation. Select from a variety of standard designs or contact your REOTEMP customer service representative to design a custom assembly to suit your desired application.

- ✓ Inspector's Lacquer & Threads Sealed with Loctite 567™
- ✓ 100% Argon Leak Checked (Maximum 1,000 psi)
- ✓ Optional ID Tag for Complete Assembly
- ✓ Packaged for Out of Box Installation
- ✓ DP Assemblies Mounted with 316SS Compression Fittings & 316 Tubing
- ✓ To Customize Your Design Contact REOTEMP Customer Service

**HOW TO ORDER:**  
Choose options to build a part number.

PT45P1A2P20-D-T-TS

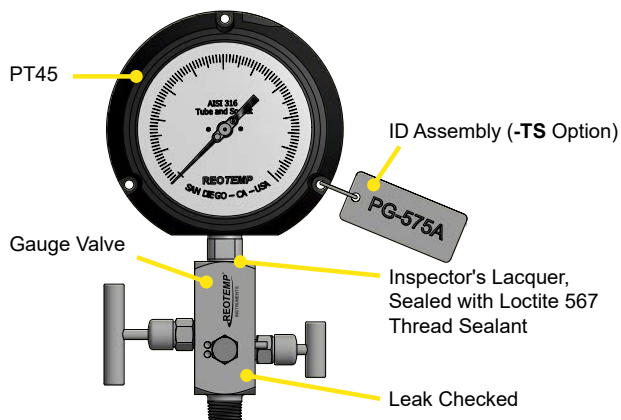
// G20H22S

-A1

SELECT PRESSURE GAUGE

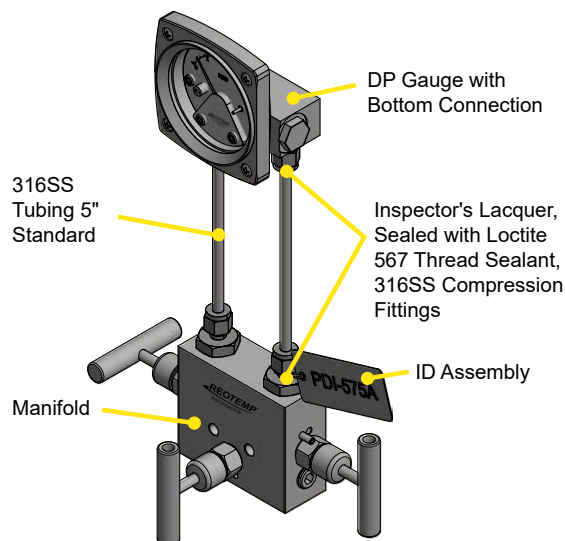
SELECT VALVE

SELECT MOUNT



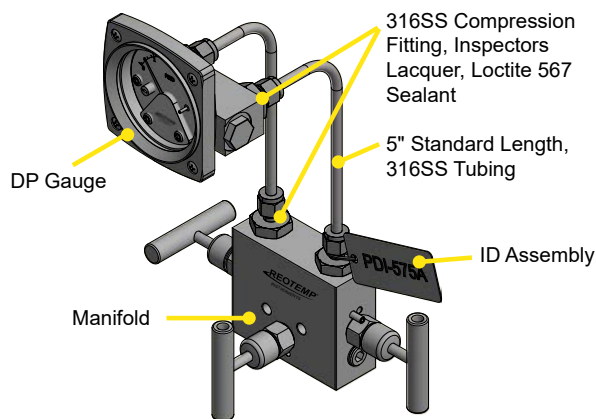
-A1

Valve mounted to pressure instrument. (Example: Gauge, Switch Direct Mount or Transmitter.)



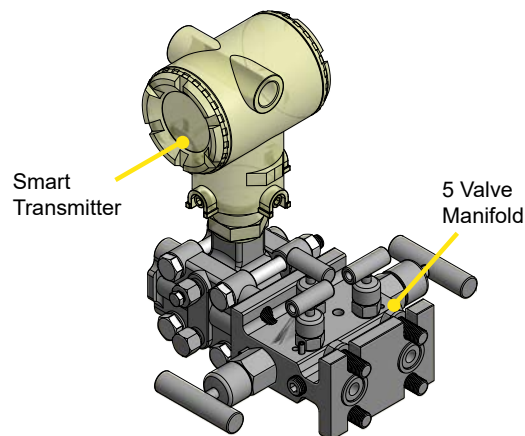
-A4

Bottom mounted differential pressure gauge to manifold.



-A5

Back mounted threaded differential pressure gauge to manifold.



-A6

Differential transmitter to manifold.

VALVES

## VALVE OPTIONS



Visit [reotemp.com](https://reotemp.com)

- ✓ Check Stock
- ✓ Get Price
- ✓ Configure Part #
- ✓ Download PDF Data Sheets

		G10	G20	G30	G40	N10	M2PH	M2PS	M2LH	M2LS	M2M	M30H	M30S	M3M	M50H	M50S
<b>PACKING/O-RINGS</b>																
P1	PTFE Packing	✓	✓	✓	✓	✓	✓	✓	✓	✓	✓	✓	✓	✓	✓	✓
P2	Grafoil Packing	H	H	H	H	H	✓	N/A	✓	N/A	✓	✓	N/A	N/A	✓	N/A
P3	EPDM O-Ring	✓	N/A	N/A	N/A	N/A	N/A	N/A	N/A	N/A	✓	N/A	N/A	✓	N/A	N/A
P4	FFKM (Kalrez 3018) O-Ring	✓	N/A	N/A	N/A	N/A	N/A	N/A	N/A	N/A	✓	N/A	N/A	✓	N/A	N/A
P5	NBR O-Ring	✓	N/A	N/A	N/A	N/A	N/A	N/A	N/A	N/A	✓	N/A	N/A	✓	N/A	N/A
<b>SOFT SEATS</b>																
S1	PEEK	S	S	S	S	S	N/A	N/A	N/A	N/A	N/A	N/A	N/A	N/A	N/A	✓
S2	PCTFE	S	S	S	S	S	N/A	N/A	N/A	N/A	N/A	N/A	N/A	N/A	N/A	✓
<b>STEM TIPS</b>																
T1	Non-Rotating SS Stem Tip	✓	✓	✓	✓	✓	✓	✓	✓	✓	✓	✓	✓	✓	✓	✓
T5	Ball (440C Stainless) Stem Tip	H	H	H	H	H	✓	N/A	✓	N/A	N/A	✓	N/A	N/A	✓	N/A
T6	Ball (Carbide) Stem Tip	H	H	H	H	H	✓	N/A	✓	N/A	N/A	✓	N/A	N/A	✓	N/A
T7	Ball (Ceramic) Stem Tip	H	H	H	H	H	✓	N/A	✓	N/A	N/A	✓	N/A	N/A	✓	N/A
T8	Ball (Monel) Stem Tip	H	H	H	H	H	✓	N/A	✓	N/A	N/A	✓	N/A	N/A	✓	N/A
T9	Regulating Hard Stem Tip	H	H	H	H	H	✓	N/A	✓	N/A	N/A	✓	N/A	N/A	✓	N/A
<b>MOUNTING OPTIONS</b>																
M1	CS 2" Pipe Mounting Bracket	N/A	✓	✓	N/A	N/A	N/A	N/A	N/A	N/A	N/A	✓	✓	✓	✓	✓
M2	SS 2" Pipe Mounting Bracket	N/A	✓	✓	N/A	N/A	N/A	N/A	N/A	N/A	N/A	✓	✓	✓	✓	✓
M3	1 Nut	✓	N/A	N/A	✓	✓	N/A	N/A	N/A	N/A	N/A	N/A	N/A	N/A	N/A	N/A
M4	2 Nuts	✓	N/A	N/A	✓	✓	N/A	N/A	N/A	N/A	N/A	N/A	N/A	N/A	N/A	N/A
<b>EXTRAS</b>																
NC	NACE Compliance MR0175*	✓	✓	✓	✓	✓	✓	✓	✓	✓	✓	✓	✓	✓	✓	✓
OX	Cleaned for O2 Service	✓	✓	✓	✓	✓	✓	✓	✓	✓	✓	✓	✓	✓	✓	✓
IH	Internal Hydrostatic Test	✓	✓	✓	✓	✓	✓	✓	✓	✓	✓	✓	✓	✓	✓	✓
PM	Positive Material ID	✓	✓	✓	✓	✓	✓	✓	✓	✓	✓	✓	✓	✓	✓	✓
EX	Extended Body Design	N/A	✓	N/A	N/A	N/A	N/A	N/A	N/A	N/A	N/A	N/A	N/A	N/A	N/A	N/A
RV	Right Vent	N/A	✓	✓	N/A	N/A	N/A	N/A	N/A	N/A	N/A	N/A	N/A	N/A	N/A	N/A
HP	1/2" Hex Plug	N/A	N/A	N/A	✓	N/A	✓	N/A	N/A	N/A	N/A	N/A	N/A	N/A	N/A	N/A
BP	1/2" Bleed Plug	N/A	STD	STD	✓	N/A	✓	N/A	N/A	N/A	N/A	N/A	N/A	N/A	N/A	N/A
BV	1/2" Bleed Valve	N/A	N/A	N/A	✓	N/A	✓	N/A	N/A	N/A	N/A	N/A	N/A	N/A	N/A	N/A
FC	CS Futbol	N/A	N/A	N/A	N/A	N/A	✓	✓	✓	✓	✓	✓	✓	✓	✓	✓
FS	SS Futbol	N/A	N/A	N/A	N/A	N/A	✓	✓	✓	✓	✓	✓	✓	✓	✓	✓
DC	CS Dielectric Kit	N/A	N/A	N/A	N/A	N/A	✓	✓	✓	✓	✓	✓	✓	✓	✓	✓
DS	SS Dielectric Kit	N/A	N/A	N/A	N/A	N/A	✓	✓	✓	✓	✓	✓	✓	✓	✓	✓
AC	CS Static Adaptors	N/A	N/A	N/A	N/A	N/A	✓	✓	✓	✓	✓	✓	✓	✓	✓	✓
AS	SS Static Adaptors	N/A	N/A	N/A	N/A	N/A	✓	✓	✓	✓	✓	✓	✓	✓	✓	✓

\*Available only on SS, Monel, & Hastelloy C-276 bodies.

✓	Indicates that the option is available
N/A	Indicates the option is not available
STD	The option comes standard
H	Only available on hard seated valves
S	Only available on soft seated valves