

THIS DRAWING AND SPECIFICATIONS ARE THE PROPERTY OF REOTEMP INSTRUMENT CORP., AND ARE ISSUED IN STRICT CONFIDENCE AND SHALL NOT BE REPRODUCED, COPIED OR USED AS THE BASIS FOR MANUFACTURE OR SALE OF ITEMS DEPICTED HEREIN WITHOUT WRITTEN PERMISSION FROM REOTEMP INSTRUMENT CORP.

NOTES (UNLESS OTHERWISE SPECIFIED)

- 1) DIMENSIONS ARE IN INCHES
- 2) PRODUCTS TO BE BUILT PER REOTEMP CATALOG SPECIFICATION, UNLESS OTHERWISE SPECIFIED.

**MSXPTAR11CP\_\_MMMDDDC2XIPHVF-PMJMTSC3HT**

MSXPT -- 4.5" Phenolic Case, Solid Front/Blowout Back, Process Gauge

A -- Bottom Mount

R11 -- Process Connection: 1" x 150# RF Flange

C -- Single 1/2" FNPT Flush

P?? -- Pressure Range: Variable, Specified Below

MMM -- Monel A400 Lower, Diaphragm, Upper, Gauge Socket, and Tube

DDD -- Direct Mount, All-Welded

C2 -- Halocarbon 6.3 Seal Fill Fluid

X -- No PulsePlus

I -- Case Fill: Inert Fluid

P -- Acrylic Plastic Lens

HVF -- Hi-Vis Dial, HF Service Warning on Front & Back of Gauge

PM -- Positive Material Identification Report, 2 reports per item (lower housing & diaphragm)

JM -- 1/2" Male NPT Plug, Monel A400, Installed in Flush Port

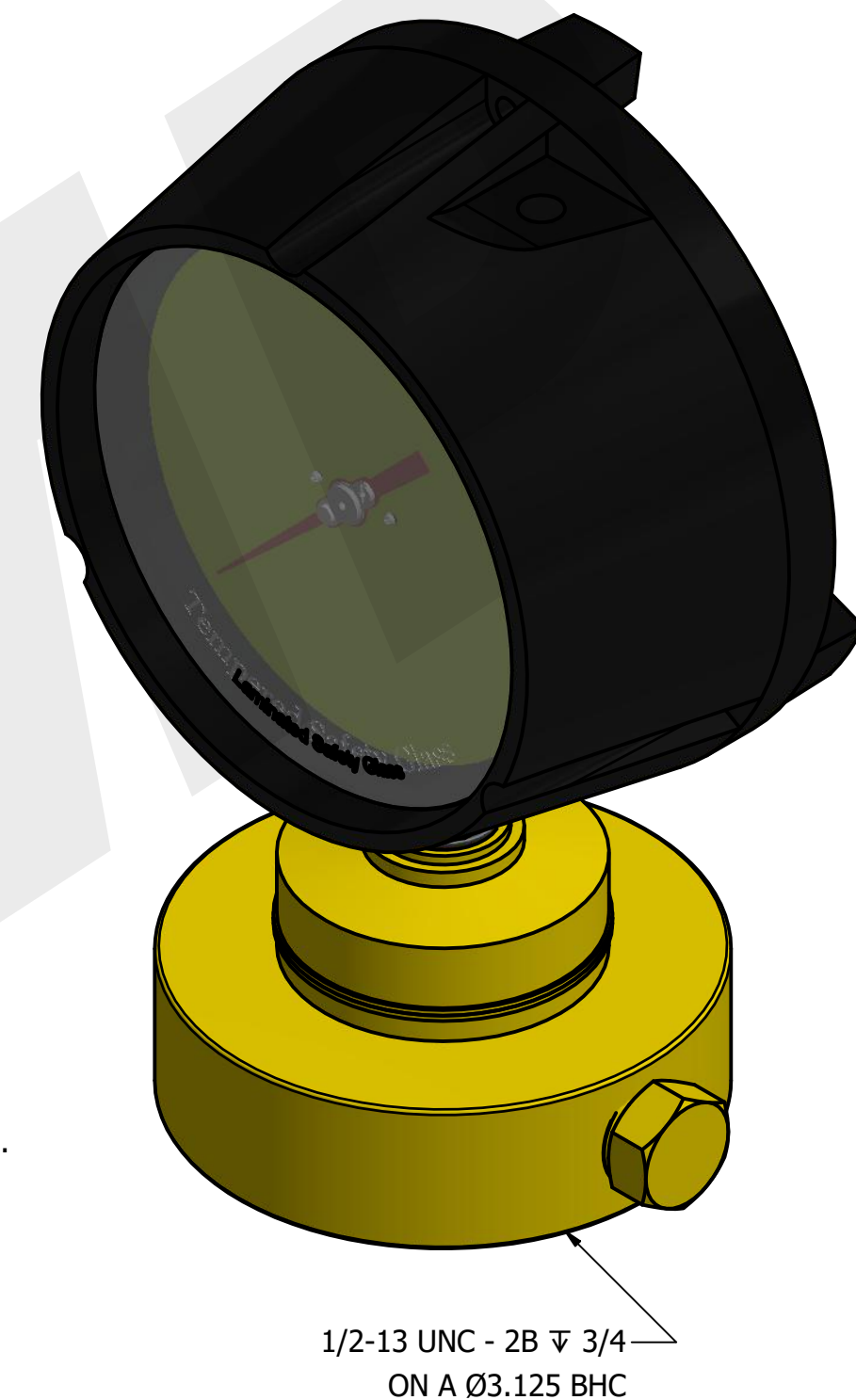
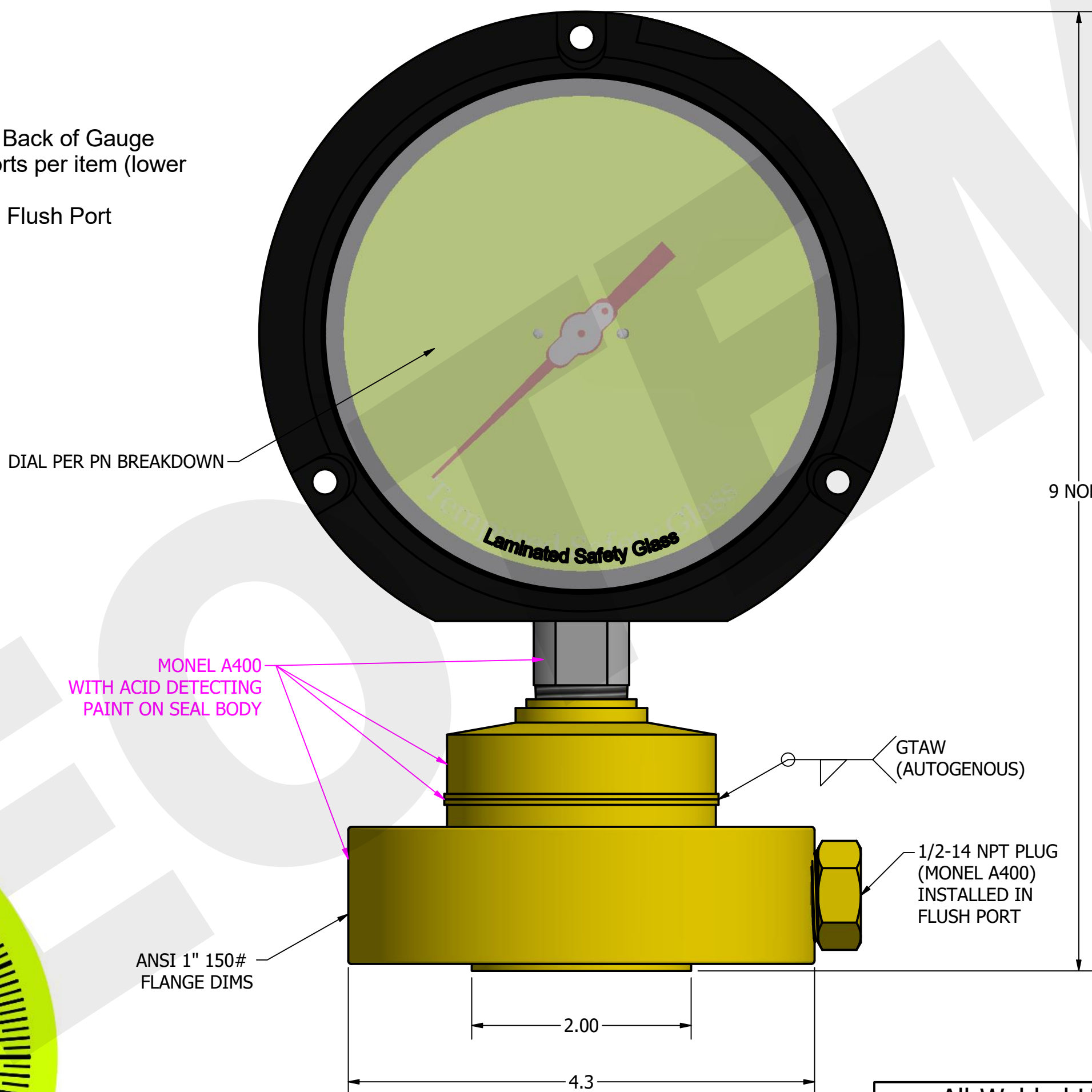
TS -- SS Tag

C3 -- 3pt. Calibration Certificate - NIST Traceable

HT -- Hydrostatic Test per ASME B31.3

REVISIONS			
REV	DESCRIPTION	DATE	APPROVED
X1	INITIAL RELEASE	11/7/18	BO
X2	ADDED DIAL DETAIL, PAINT COLOR TO 3D MODEL & OPTION TABLE ON PG 2	8/15/19	RY

RANGE CODE (P??)	PRESSURE RANGE
18	0-100psi
19	0-160psi
20	0-200psi
21	0-300psi
26	0-500psi



PART NAME <b>All-Welded HF Acid Gauge, Flanged w/ Flush Port, Monel Wetted</b>			
UNLESS OTHERWISE SPECIFIED DIMENSIONS ARE IN INCHES TOLERANCES ARE:		Reotemp Instrument Corporation 10656 Roselle Street San Diego, CA 92121 USA Phone: (858) 784-0710 Fax: (858) 784-0720	
FRACTIONS DECIMALS ANGLES ±1/32 .X ± .03 ±1° .XX ±.01 .XXX ±.005		DATE <b>11/7/2018</b> DRAWN BY <b>MNeill</b> APPROVED <b>BO</b>	
PART NO SEE PN BREAKDOWN	SIZE C	CAGE CODE 24793	DWG NO 20442
FIRST USED ON	SCALE: NTS	FILE NAME:	REV X2
			SHEET 1 OF 1