

## ALL STAINLESS STEEL LOW PRESSURE GAUGE

Reotemp's Series PC low pressure gauges offer accurate and reliable measurements of gaseous media. Offered with stainless steel internals, the Series PC is designed to withstand corrosive media and ensure a long-lasting instrument.



PC40S1



PC60S1



Dials



Custom Logo



Diaphragm Seal  
Compatible

### FEATURES / BENEFITS

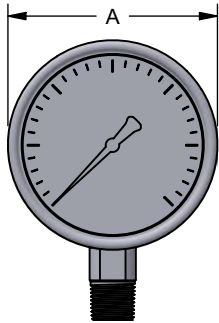
- Sensitive Diaphragm/Capsule Mechanism
- All-Welded 316 Stainless Steel Capsule and Socket
- Easy-Access Zero Reset Screw on Dial



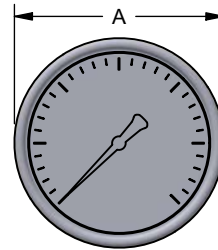
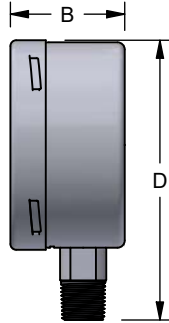
### SPECIFICATIONS

<b>Accuracy</b>	±1.6%
<b>Ambient Limits</b>	-40°F/150°F
<b>Process Limits</b>	-40°F/200°F
<b>Process Limits with Diaphragm Seal</b>	-60°F/350°F (Direct Mount)* -110°F/750°F (Remote Mount or Cooling Tower)* *Exact limits depend on diaphragm seal and fill fluids.
<b>Wetted Materials</b>	Capsule: 316L Socket: 316L
<b>Lens</b>	Laminated Safety Glass (Standard) or Plastic
<b>Other Materials</b>	Case: 304SS Ring: 304SS, Bayonet Twist-Off Dial: White Aluminum, Black Letters Case-to-Socket: FPM O-Ring, Vented Case
<b>Fillable</b>	Yes, ≥ 40 in H <sub>2</sub> O Range Span
<b>Restrictor Screw</b>	Yes
<b>Maximum Working Pressure</b>	Stable = 100% Momentary = 130% of scale
<b>Weight</b>	4" = 1.3 lbs, Filled 2.1 lbs 6" = 2.2 lbs, Filled 4 10" = 4.41lbs (Not Fillable)

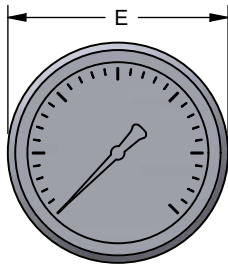
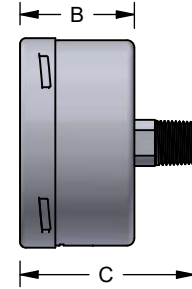
## ALL STAINLESS STEEL LOW PRESSURE GAUGE



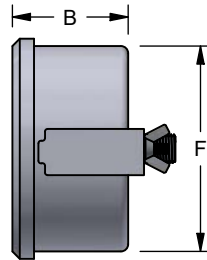
**Bottom Bayonet Case**



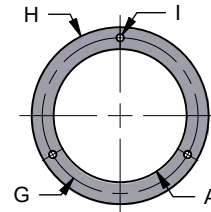
**Back Connect Bayonet Case**



**U-Clamp Crimped Case**



*Recommended Panel Cutout*  
 PC40 = 4.02" ± 0.02"  
 PC60 = 6.38" ± 0.02"



**Mounting Flange Bayonet Case**

*Recommended Panel Cutout*  
 PC40 = 4.09" ± 0.02"  
 PC60 = 6.46" ± 0.02"  
 PC10 = 10.00" ± 0.02"

**Table**

	A	B	C	D	E	F	G	H	I
PC40	3.98"	2.17"	3.31"	5.30"	4.17"	3.90"	4.57"	5.20"	0.19"
PC60 ≤6 inH <sub>2</sub> O	6.34"	2.17"	3.31"	7.70"	6.57"	6.26"	7.01"	7.72"	0.23"
PC60 ≥10 inH <sub>2</sub> O	6.34"	2.01"	3.15"	7.70"	6.57"	6.26"	7.01"	7.72"	0.23"
PC10	9.88"	2.28"	3.46"	11.44"	N/A	N/A	10.63"	11.22"	0.23"

## ALL STAINLESS STEEL LOW PRESSURE GAUGE

PRESSURE GAUGES



Visit [reotemp.com](http://reotemp.com)

- ✓ Check Stock
- ✓ Get Price
- ✓ Configure Part #
- ✓ Download PDF Data Sheets

**HOW TO ORDER:** Choose options to build a part number. For example: **PC40S1A2P52-D-S-HV**

PC40	S	1	A	2	P52	-D	-S	-HV
DIAL SIZE	CASE TYPE	CAPSULE & SOCKET	MOUNT TYPE	CONNECTION	RANGE CODE	CASE FILL	LENS	OPTIONS
<b>PC40</b> = 4" <b>PC60</b> = 6" <b>PC10</b> = 10" <sup>2</sup>	<b>S</b> = 304SS Case & Bezel w/ Removable Bayonet, Zero Correction on Dial <b>*C</b> = 304SS Crimped Case, Zero Correction on Dial Access Through Window <b>*T</b> = 316SS Case and Bezel with Removable Bayonet	<b>1</b> = 316SS	<b>A</b> =  Bottom <b>B</b> =  Bottom/Rear Flange <b>*C</b> =  Center Back <b>*D</b> =  Center Back "U" Clamp <sup>1</sup> <b>*E</b> =  Center Back/Front Flange	<b>4</b> = 1/4" NPT <b>2</b> = 1/2" NPT	<b>Common Ranges</b> <b>P50D</b> = 0-1.6 in H <sub>2</sub> O <b>P504</b> = 0-4 in H <sub>2</sub> O <b>P506</b> = 0-6 in H <sub>2</sub> O <b>P50</b> = 0-10 in H <sub>2</sub> O <b>P51</b> = 0-15 in H <sub>2</sub> O <b>P52</b> = 0-30 in H <sub>2</sub> O <b>P53</b> = 0-60 in H <sub>2</sub> O <b>P54</b> = 0-100 in H <sub>2</sub> O <b>P55</b> = 0-160 in H <sub>2</sub> O <b>P56</b> = 0-200 in H <sub>2</sub> O  <b>Available Ranges</b> ■ 1.6" to 300" Water Column ■ Gauge Pressure, Vacuum, or Compound  <b>Standard Units</b> ■ in H <sub>2</sub> O  <b>Available Units</b> ■ kPa      ■ inHg ■ mbar     ■ mmHg ■ psi       ■ oz/in <sup>2</sup> ■ mmH <sub>2</sub> O   ■ & more  <i>For Additional Range Codes See Page 77</i>	<b>-D</b> = Dry <b>-G</b> = Glycerin**  **40 in H <sub>2</sub> O Span or Greater  Case is Not Field Fillable	<b>-S</b> = Laminated Safety Glass (Standard) <b>-P</b> = Plastic	<b>-HV</b> = Hi-Vis™ Dial <b>-OX</b> = Cleaned for O <sub>2</sub> Service <b>-C3</b> = 3 pt. Calibration Certificate <b>-TS</b> = Stainless Steel Tag <b>-NC</b> = NACE Compliance Certificate <b>-PM</b> = Positive Material Identification Certification <b>-R1</b> = ± 1% Full Scale Accuracy Upgrade <sup>3</sup>  <i>For Additional Pressure Gauge Options See Page 82</i>

\*Non-standard configuration  
<sup>1</sup>Mount type D must select case type C  
<sup>2</sup>PC10S1 only available with mount type A  
<sup>3</sup>≥10 in H<sub>2</sub>O Span and Dry Case Only

### Diaphragm Seal Suitability Guide

Low pressure capsule gauges are very sensitive and require diaphragm seals with high sensitivity and high fluid displacement. If a diaphragm seal is required to isolate the process fluid from the pressure gauge, the following seal model types are available for the Series PC.

#### Diaphragm Seal Model

High Displacement



#### Total Gauge Span\* (in H<sub>2</sub>O)

	10"	15"	20"	30"	40"	60"	100"	160"	200"	300"
W6	X	X	X	X	X	X	S	S	T	T
W7	X	X	X	S	S	T	T	T		
V5	X	S	S	T	T	T	T	T		
T6	X	X	X	X	X	S	S	S	S	S

\*Total gauge span is additive of negative and positive pressures.

Example: -15 - 0 - 30 psi = 45 psi span

  Assembly will function correctly with minimal accuracy degradation.

T Assembly will function correctly given stable temperature.

S Assembly is highly sensitive to orientation and temperature variance. Reotemp cannot guarantee a stated accuracy.

X Assembly will not work. The diaphragm does not displace enough fill fluid to drive the pressure gauge.

## PRESSURE GAUGE RANGES AND CODES

PRESSURE GAUGES

### LOW PRESSURE RANGES (PC SERIES ONLY)

Low Pressure Ranges									
inH <sub>2</sub> O		oz/in <sup>2</sup>		inH <sub>2</sub> O & oz/in <sup>2</sup>		mbar		psi	
Code	Range	Code	Range	Code	Range	Code	Range	Code	Range
P50D	0-1.6 inH <sub>2</sub> O *					M50D	0-4 mbar*		
P504	0-4*					M504	0-10*		
P506	0-6*					M506	0-16*		
P50	0-10	Z50	0-6 oz/in <sup>2</sup>	Q50Z	0-10 inH <sub>2</sub> O & 0-6 oz/in <sup>2</sup>	M50	0-25		
P51	0-15	Z51	0-8			M51	0-40		
P49	0-20	Z49	0-10	Q49C	0-20 & 0-12				
P515	0-25	Z52E	0-15			M522	0-60		
P52	0-30			Q52N	0-30 & 0-18	M521	0-70	I52	0-1 psi
P525	0-40	Z52	0-20	Q525W	0-40 & 0-24	M525	0-100		
P53	0-60	Z535	0-35	Q53	0-60 & 0-35	M53F	0-150	I53	0-2**
P54	0-100	Z54	0-60	Q54B	0-100 & 0-60	M54	0-250	I54	0-3
P55	0-160					M55	0-400	I55	0-5
P56	0-200	Z56	0-100	Q56C	0-200 & 0-115	M56	0-500	I56	0-7
Vacuum Ranges									
P88	-10-0 inH <sub>2</sub> O	Z88	-6-0 oz/in <sup>2</sup>	Q88	-10/0 inH <sub>2</sub> O & -6/0 oz/in <sup>2</sup>				
P90	-30-0	Z90	-20-0	Q90	-30/0 & -18/0	M905	-100-0 mbar	I90	-1-0 psi
P91	-60-0	Z91	-30-0	Q91	-60/0 & -35/0	M94	-200-0	I91	-2-0
P92	-100-0	Z92	-60-0	Q92	-100/0 & -60/0	M95	-400-0		
Compound Ranges									
P7A	-5/0/5 inH <sub>2</sub> O	Z7A	-3/0/3 oz/in <sup>2</sup>			M71	-20/0/20 mbar		
P70	-10/0/10			Q70C	-10/0/10 inH <sub>2</sub> O & -6/0/6 oz/in <sup>2</sup>	M72E	-30/0/30		
P71	-15/0/15					M72	-40/0/40		
P72	-20/0/20	Z72	-10/0/10	Q72C	-20/0/20 & -12/0/12	M72A	-50/0/50	I73	-1-0-1 psi
P73	-30/0/30			Q73C	-30/0/30 & -18/0/18	M735	-100/0/100	I74	-2-0-2
P74	-60/0/60	Z745	-30/0/30					I55U	-3/0/3
P75	-100/0/100			Q75B	-100/0/100 & -60/0/60			P14C	-5/0/5

\*available on 4" & 6" sizes only  
 \*\*short scaled range