

THIS DRAWING AND SPECIFICATIONS ARE THE PROPERTY OF REOTEMP INSTRUMENT CORP., AND ARE ISSUED IN STRICT CONFIDENCE AND SHALL NOT BE REPRODUCED, COPIED OR USED AS THE BASIS FOR MANUFACTURE OR SALE OF ITEMS DEPICTED HEREIN WITHOUT WRITTEN PERMISSION FROM REOTEMP INSTRUMENT CORP.

NOTES (UNLESS OTHERWISE SPECIFIED)

- 1) DIMENSIONS ARE IN INCHES
- 2) BEST COMMERCIAL MANUFACTURING PRACTICES APPLY, UNLESS OTHERWISE SPECIFIED.
- 3) PART TO BE FREE OF OILS AND BURRS
- 4) MATERIAL: SEE BELOW

**PM25C1A2XXX-X**

PM25C: Industrial Stainless Gauge Series PM

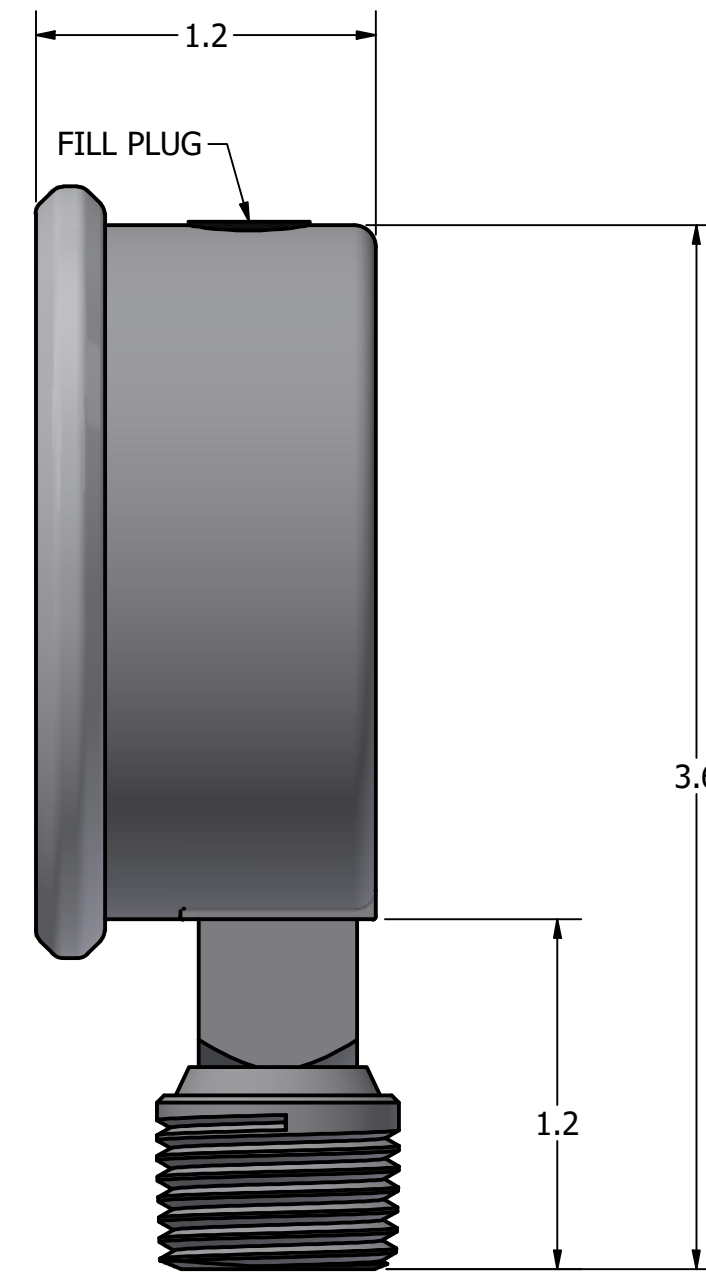
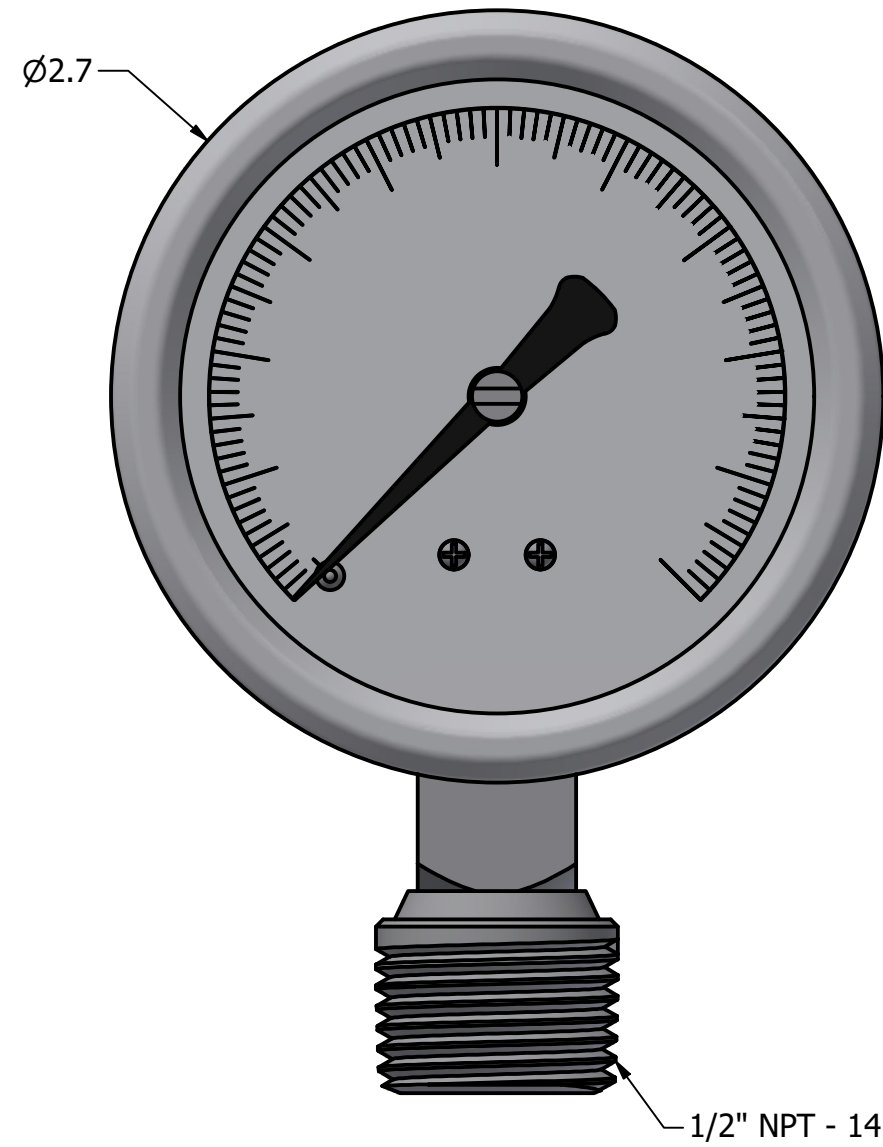
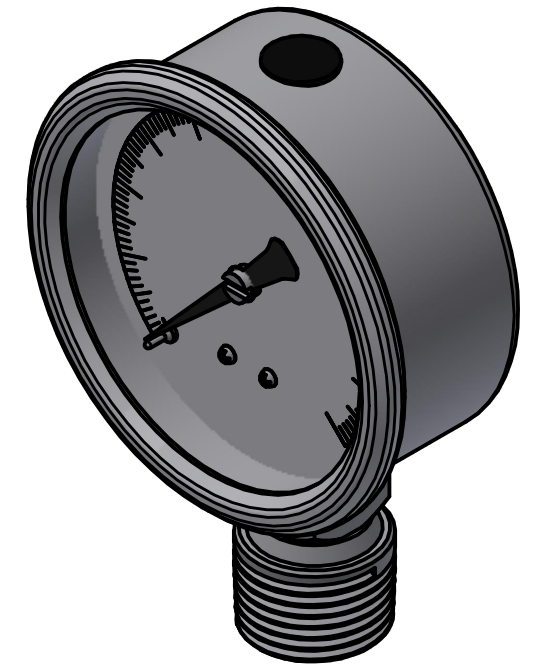
2.5" Dial, 304SS Case, Crimped Bezel

1: Wetted Parts - 316 SS Tube & Socket

A: Bottom Connection (Stem Mount)

2: Process Connection - 1/2" NPT

REVISIONS			
REV	DESCRIPTION	DATE	APPROVED
X1	INITIAL RELEASE	9/16/2024	



PART NAME PM25C1A2		Reotemp Instrument Corporation		DATE
UNLESS OTHERWISE SPECIFIED DIMENSIONS ARE IN INCHES TOLERANCES ARE: DECIMALS ANGLES SURFACES .X ± .03 ±1° 63 .XX ± .01 ±1° .XXX ± .005 FRACTIONS ±1/32 .XXXX ± .002 ±1/32 RADII = 1/32		10656 Roselle Street San Diego, CA 92121 USA		9/16/2024
		Phone: (858) 784-0710 Fax: (858) 784-0720		DRAWN BY Michael Pinzon
PART NO	SIZE C	CAGE CODE 24793	DWG NO	REV
FIRST USED ON	SCALE: NTS	FILE NAME:	SHEET 1 OF 1	