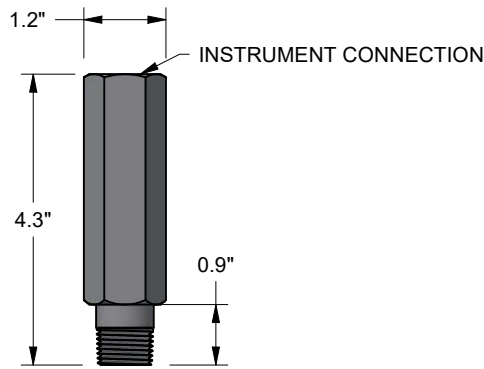


COMPACT SIPHON



FEATURES / BENEFITS

- Protects instrument from excess process temperatures, hot gases (including steam), spikes, and pulsations.
- Can be used instead of a pigtail siphon.
- Is suitable where vibration is present.
- Can be used for many low temperature applications.

SPECIFICATIONS

Maximum Temperature	1,000°F
Minimum Temperature	-425°F
Maximum Pressure	6,000 psi
Material	316SS (UNS 1.4571)

Note: May only be installed vertically.

ACCESSORIES

HOW TO ORDER: Choose options to build a part number. For example: PXCS2F2MS

PXCS

2F

2M

S

MODEL

INSTRUMENT
CONNECTION

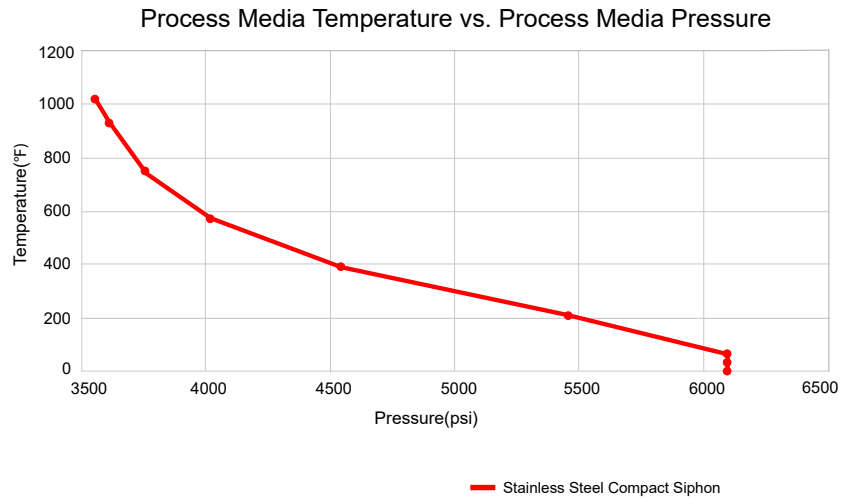
PROCESS
CONNECTION

MATERIAL

PXCS = Compact Siphon 2F = 1/2" Female NPT 2M = 1/2" Male NPT S = 1.457 SS (316Ti)

COMPACT SIPHON

Stainless Steel Compact Siphon Temperature Vs. Pressure



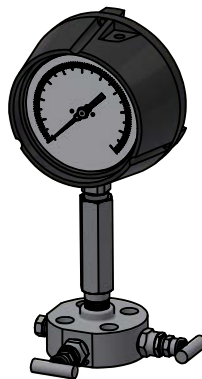
Instrument and Valve Assemblies

Reotemp offers in house mounting services by preinstalling pressure instruments, accessories, and/or valves prior to shipping to allow for stress free/easy installation.

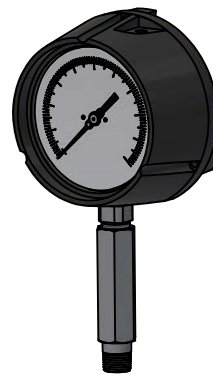
- Inspector's Lacquer & High Temperature Thread Sealant
- 100% Argon Leak Checked (Maximum 1,000 psi)
- Packaged for Out of Box Installation



Compact Siphon Mounted to Valve and Pressure Gauge



Compact Siphon Mounted Between Monoflange and Pressure Gauge



Compact Siphon Mounted to Pressure Gauge

Note: Pre-installing a pressure instrument is not recommended if siphon is to be filled prior to service.