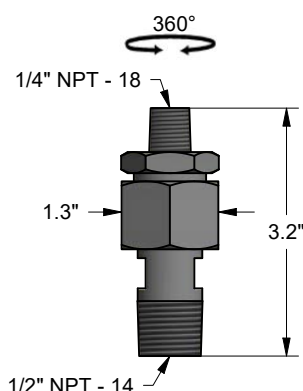


## SWIVEL GAUGE ADAPTER

Swivel adapters are ideal for easy positioning of a pressure instrument to process piping. NPT connections will eventually tighten to the point where they will dictate where a gauge is facing. This adapter allows the user to securely screw in their gauge without concern for the gauge's alignment. Once the gauge is installed, the instrument can be rotated as needed to assist in easy reading for the operator. Once a position is chosen, the adapter can be tightened to secure the gauge's position. For differential gauges, this adapter is essential for mounting to some manifolds without tubing. Two adapters will be needed for those situations—one for the high side and one for the low side.



PXSAD4M2MS

### FEATURES AND BENEFITS

- 360° Position Selection at Installation
- Complies with NACE MR0175
- Cleaner and More Direct Mounting for Differential Pressure Gauges.

### SPECIFICATIONS

- Maximum Working Pressure: 6,000 psi (with Optional 10,000psi)
- Maximum temperature: 248°F (with optional 450°F and 1100°F)
- Connections: MxF, MxM, or FxF NPT
- Body Material: 316SS
- Seal Material: Viton (with Optional PTFE and No Seals)

SWIVEL GAUGE ADAPTER

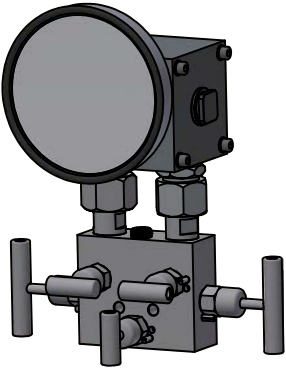
HOW TO ORDER: Choose options to build a part number. For example: **PXSAD2F2MS-TS**

<b>PXSAD</b>	<b>2F</b>	<b>2M</b>	<b>S</b>	<b>-TS</b>
MODEL	OUTLET CONNECTION	INLET CONNECTION	MATERIAL	OPTIONS
<b>PXSAD</b> = Swivel Adapter	<b>4F</b> = 1/4" Female NPT <b>2F</b> = 1/2" Female NPT <b>4M</b> = 1/4" Male NPT <b>2M</b> = 1/2" Male NPT	<b>4F</b> = 1/4" Female NPT <b>2F</b> = 1/2" Female NPT <b>4M</b> = 1/4" Male NPT <b>2M</b> = 1/2" Male NPT	<b>S</b> = 316SS	<b>HP</b> = High Pressure (10,000psi) <b>PM</b> = Positive Material Test <b>MR</b> = MTR for Wetted Parts <b>OX</b> = Cleaned for Oxygen Service <b>NS</b> = No Seals (1,100°F Max) <b>PS</b> = PTFE Seals (450°F Max) <b>TS</b> = Stainless Steel Tag

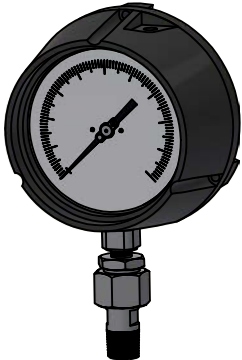
Swivel Adapter and Instrument Assemblies

Reotemp offers in house mounting services by preinstalling pressure instruments, accessories, and/or valves prior to shipping to allow for stress free/easy installation.

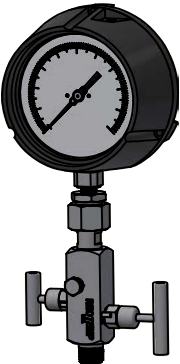
- ✓ Inspector's Lacquer and Threads Sealed with Loctite 567 or High Temperature Sealant
- ✓ 100% Argon Leak Checked (Maximum 1,000 psi)
- ✓ Packaged for Out of Box Installation



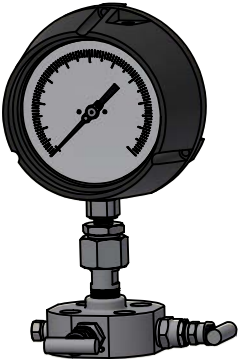
Valve Mounted to Differential Pressure Gauge Using Two Adapters



Pressure Gauge Mounted to an Adapter



Adapter Mounted Between a Pressure Gauge and a Gauge Valve



Adapter Mounted Between a Pressure Gauge and a Monoflange