

2-VALVE BLOCK AND BLEED VALVE



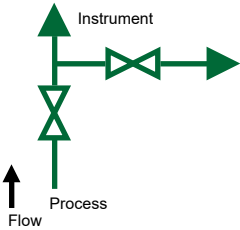
Block and bleed valves allow pressure isolation, venting, and instrument removal without shutting down the system. The 1/4" NPT port allows easy calibration checks, venting to atmosphere, or capturing process media with direct connection to piping.

FEATURES / BENEFITS

- Complies with MSS SP-99 and MSS SP-132 Standards Where Applicable
- Rolled Threads for Strength, Durability, and Ease of Use
- Bleed Plug Standard
- 316SS Body Option Complies with NACE MR0175
- Leak Tested Before Shipping
- Available Factory-Installed on Reotemp Instruments

SPECIFICATIONS

Body Material	316SS, Carbon Steel, Monel, Hastelloy C276, Duplex 2205, Super Duplex 2507
Max Pressure Rating	10,000 psi
Min/Max Temperature Rating	-67°F to 1,000°F
Seats Available	Hard, POM, PEEK, PCTFE
Connections Available	1/4"NPT, 1/2"NPT, 3/4"MNPT
Bleed Connection	1/4"FNPT



## 2-VALVE BLOCK AND BLEED VALVE

**HOW TO ORDER:** Choose options to build a part number. For example: **G22HTX22S-HT**

<b>G22</b>	<b>H</b>	<b>T</b>	<b>X</b>	<b>22</b>	<b>S</b>	<b>-HT</b>
MODEL	SEAT TYPE	STEM SEAL	SEAT/TIP	CONNECTIONS	BODY MATERIAL	OPTIONS
<b>G22</b> = 2-Valve Block & Bleed Process Valve	<b>H</b> = Hard Seat (Integral) <b>S</b> = Soft Seat	<b>T</b> = PTFE Packing-Standard <b>V</b> = High Pressure FKM O-Ring <sup>1</sup> <b>G</b> = Graphite Packing <sup>1</sup> <b>H</b> = High Pressure PTFE Packing <sup>2</sup> <b>J</b> = High Pressure Graphite Packing <sup>2</sup> <b>F</b> = FKM O-Ring	<b>X</b> = Hard Seat (Integral) -Standard <b>S</b> = Hard Seat With Stellite Valve Tip <b>P</b> = POM - Standard Soft Seat <sup>3</sup> <b>K</b> = PEEK Soft Seat <b>C</b> = PCTFE Soft Seat <sup>4</sup> <b>R</b> = Hard Seat With POM Tip <b>L</b> = Hard Seat With PCTFE Tip	<b>22</b> = 1/2" MNPT Inlet x 1/2" FNPT Outlet <b>2F</b> = 1/2" FNPT Inlet x 1/2" FNPT Outlet <b>2M</b> = 1/2" MNPT Inlet x 1/2" MNPT Outlet <b>24</b> = 1/2" MNPT Inlet x 1/4" FNPT Outlet <b>2R</b> = 1/2" FNPT Inlet x 1/2" MNPT Outlet <b>44</b> = 1/4" MNPT Inlet x 1/4" FNPT Outlet <b>4F</b> = 1/4" FNPT Inlet x 1/4" FNPT Outlet <b>32</b> = 3/4" MNPT Inlet x 1/2" FNPT Outlet	<b>S</b> = 316SS <b>M</b> = Monel 400 <b>H</b> = Hastelloy C-276 <b>C</b> = Carbon Steel <b>2</b> = Duplex <b>7</b> = Super Duplex	<b>OX</b> = Cleaned for Oxygen Service <sup>5</sup> <b>M3</b> = 2" SS Pipe Mounting Kit <b>HT</b> = Internal Hydrostatic Test <b>PM</b> = Positive Material Test <b>MR</b> = MTR for Body <b>PP</b> = Power Piping According to ASME B31.1 <sup>6</sup> <b>LT</b> = Very Low Process Temperature (-67°F) <sup>7</sup> <b>MT</b> = Medium Low Process Temperature (-40°F) <sup>7</sup> <b>NP</b> = No Bleed Plug <b>T1</b> = Non-Rotating Stem Tip <b>TS</b> = Stainless Steel Tag

<sup>1</sup>Available in hard seat only.

<sup>2</sup>Increases max pressure to 10,000 psi for PTFE and to 7,200 for Graphite. Available in hard seat only.

<sup>3</sup>POM is comparable to Delrin.

<sup>4</sup>PCTFE is equivalent to Kel-F.

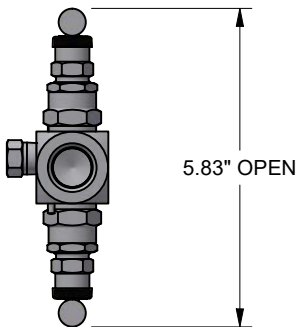
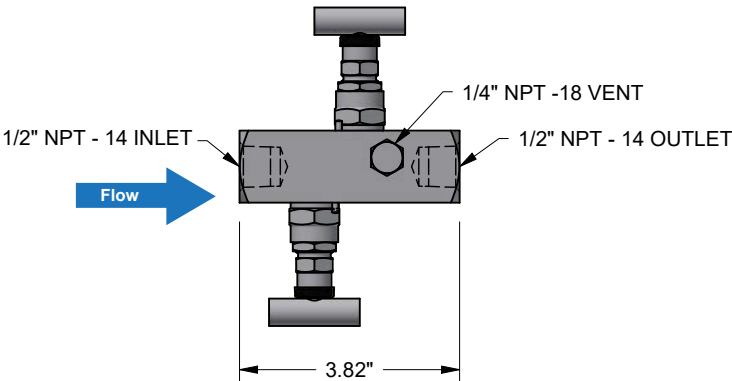
<sup>5</sup>Max temperature is 392°F at 1,305 psi. Max pressure is 6,000psi at 140°F.

<sup>6</sup>Graphite packing with S body only.

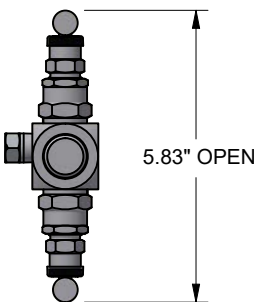
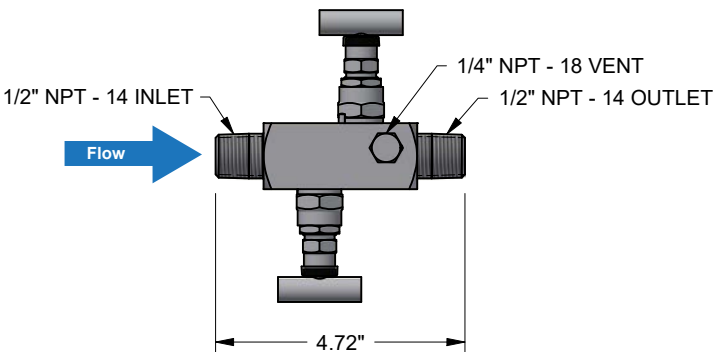
<sup>7</sup>MT is not available with carbon steel, FKM, or PEEK. LT requires a hard seat or PCTFE soft seat, PTFE stem seal, and S body.

**Note:** Not all combinations in the above table are possible. Conversely, if a combination is desired but not seen, ask your Reotemp Sales Representative. Additional configurations and options are available upon request.

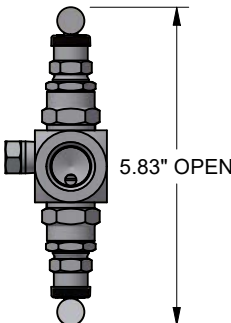
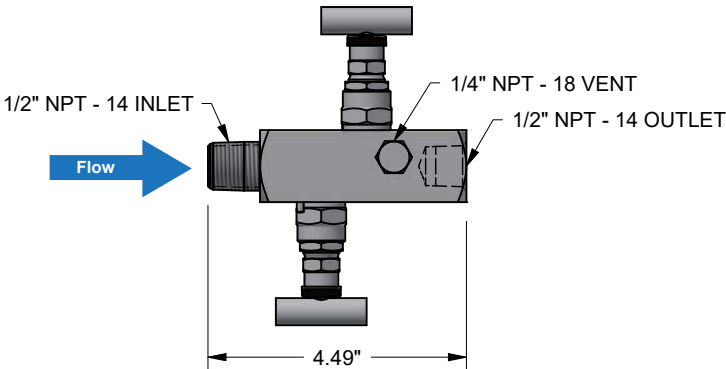
2-VALVE BLOCK AND BLEED VALVE



G22HTX2FS



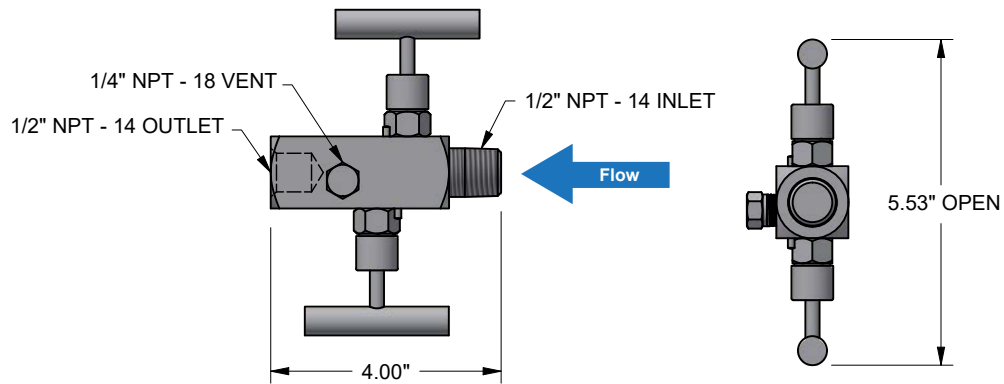
G22HTX2MS



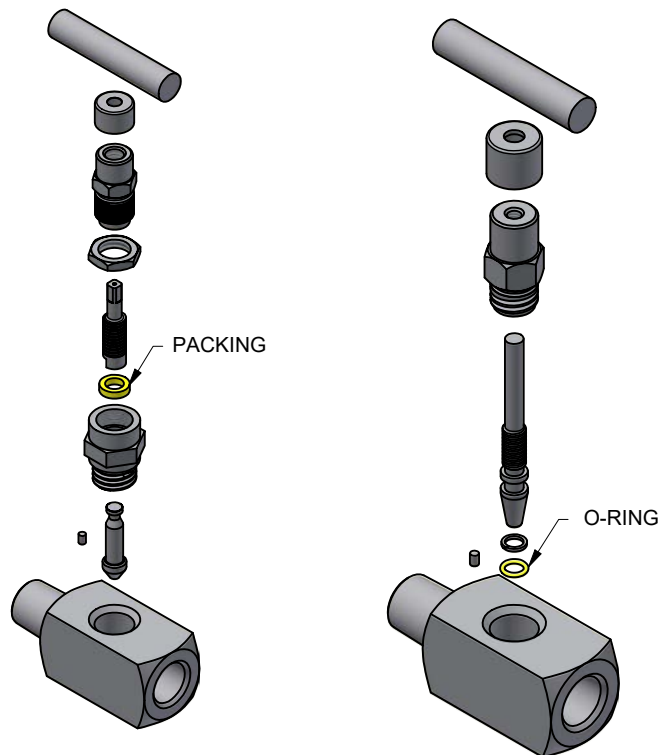
G22HTX22S

VALVES

## 2-VALVE BLOCK AND BLEED VALVE



G22HVX22S



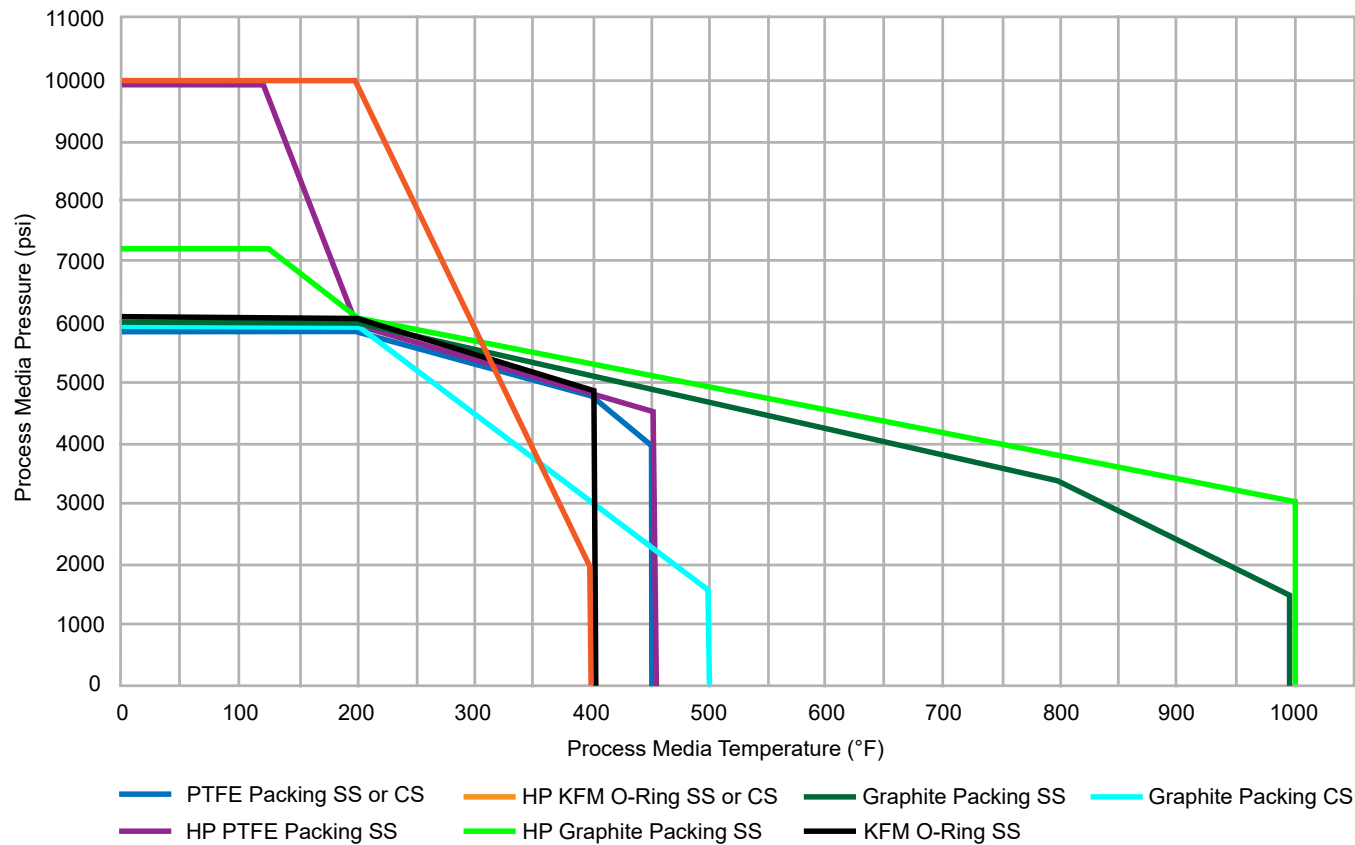
Packed Bonnet Seal Example

O-Ring Example

**Note:** Dimensions are given as examples for reference. Contact your Reotemp sales representative for more exact and detailed drawings.

2-VALVE BLOCK AND BLEED VALVE

Pressure Vs. Temperature



Hard Seat Ratings	
PTFE Packing SS or CS Body	6,000psi at 200°F 4,000psi at 450°F
High Pressure FKM O-Ring SS or CS Body	10,000psi at 200°F 2,000psi at 392°F
Graphite Packing and SS Body	6,000psi at 200°F 1,500psi at 1,000°F
Graphite Packing and CS Body	6,000psi at 200°F 1,500psi at 500°F
High Pressure PTFE Packing and SS Body	10,000psi at 120°F 4,500psi at 450°F
High Pressure Graphite Packing and SS Body	7,200psi at 120°F 3,000psi at 1,000°F
FKM O-Ring and SS Body	6,000psi at 200°F 4,500psi at 392°F

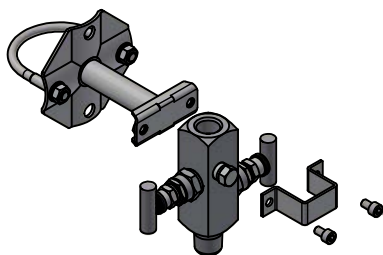
Soft Tip Max Temperature	
POM	212°F
PCTFE	302°F

Minimum Temperature Ratings	
No Additional Options	0°F
-MT Option Code	-40°F
-LT Option Code	-67°F

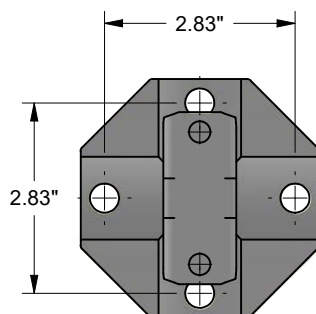
Soft Seat Ratings	
POM	6,000psi at 200°F
PEEK w/ PTFE Packing	6,000psi at 200°F 3,000psi at 400°F
PCTFE	6,000psi at 200°F

## 2-VALVE BLOCK AND BLEED VALVE

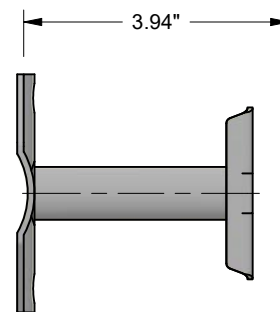
### Valve Accessories and Options



M3 (2" SS Pipe Mounting Bracket Option)

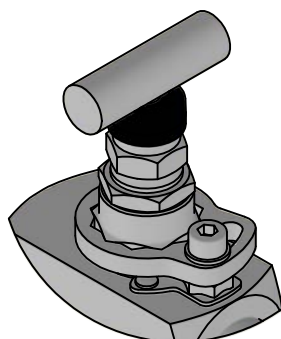


Mounting Bracket Hole Pattern

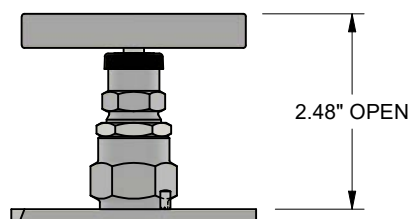


Mounting Bracket Side View

-PP (Power Piping Option)



H and J (High Pressure Packing)

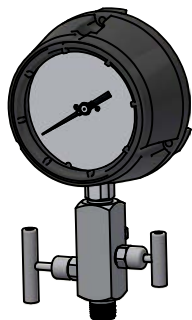


## 2-VALVE BLOCK AND BLEED VALVE

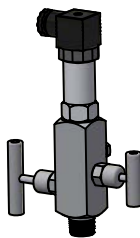
### Instrument and Valve Assemblies

#### Why order a Reotemp Instrument and Valve Assembly?

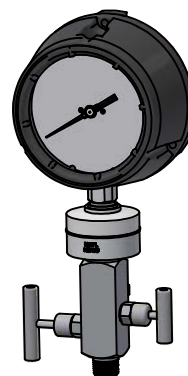
- Easy out-of-the-box installation
- All potential leak paths are factory tested (1,000 psi max)
- High quality sealant for each threaded connection
- Saves time in the field
- Fully customizable to include diaphragm seals, monoflanges, swivel adapters, etc.



Valve Mounted to Pressure Gauge



Valve Mounted to Transmitter



Valve Mounted to Diaphragm Seal

#### Why does every pressure and temperature instrument need the right valve?

- For easier maintenance and repair
- For quicker calibration checks
- For more control when putting an instrument into service
- For capturing process media before it vents to the atmosphere